

INSIDE BY PORTFOLIO 2020

Marquis: Big Hugs, Visual Support, & High Lights

01 Dec 2020

BIG HUGS

VISUAL SUPPORT

HIGH LIGHTS

Big Hugs



Gallotti & Radice's *Sophie Armchair*

Gallotti & Radice's **Sophie Armchair**, also available as sofa and a myriad of colors, provides physical and visual comfort, as shown on with **Cookies Circle Coffee Table** and **5th Avenue Storage Unit**.

BIG HUGS

VISUAL SUPPORT

HIGH LIGHTS

Visual Support





Meridiani's Plinto Dining Table

Plinto Dining Table by Meridiani sits on a base of a striking linear composition and has a table top that comes in a range of colors and shapes, including round, octagon, square and rectangle.

BIG HUGS

VISUAL SUPPORT

HIGH LIGHTS



High Lights



Sovrappensiero's Pileo Lamp for Porada

Sovrappensiero's **Pileo Lamp** for Porada, available in floor and desk models, is supported by natural canaletta walnut legs and topped with a tin-plated shade – both available in an array of finishes and colors.



INSIDE by PORTFOLIO

A HOMES SUPPLEMENT

RELATED ARTICLES



SPOTLIGHT

Enveloping Calmness



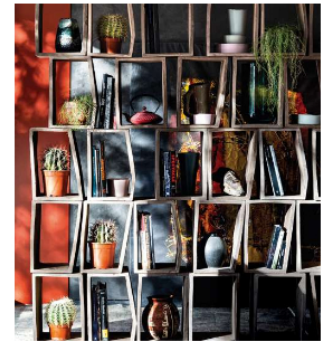
SPOTLIGHT

Vertical Connectivity



LIFESTYLE

SPACE: Ready For Outings, Strips In Place & Long Repose



SPOTLIGHT

XTRA: Mix With Confidence & Wallow In Whims



INSIDE BY PORTFOLIO 2020

Enveloping Calmness

11 Dec 2020





Nidhi Jain and Emily Loberg have recently completed the full renovation of a 3,500-square foot apartment in a tranquil pocket of Nassim Hill. Although they have previously worked on four other houses for the same client, attempting to capture and reflect the changes in her life, they were asked to create something new for this latest collaboration.



A meditation and holistic health coach, their client asked for “a totally Zen and minimalistic space”, which served as the starting point for their design. She also asked for the four bedrooms in the unit to be allocated to each of her two children and herself, and for a meditation room and a study to be set up.

Jain and Loberg delivered a superbly elegant home whose parts are gradually revealed in graceful turns – much like the self-realization that comes through a string of meditative discoveries. For instance, unifying elements are subtly introduced to hint at what is to come: the wooden slats outside the main door presage the screen that sets off the foyer from the open plan living room and the elevated dining area beyond, the abundance of wood a clue to the timber floors and the wooden furniture in natural finish.





The client's collection of objects and artworks, along with deeply hued furniture and an antique rug, provide jolts of color throughout the space. And if those were not enough, the designing duo also painted the insides of the discreet built-in cupboards with a shock of crimson. Meanwhile, a selection of sleek minimalist furniture from Grafunkt (www.grafunkt.com) strengthened the Zen feel.

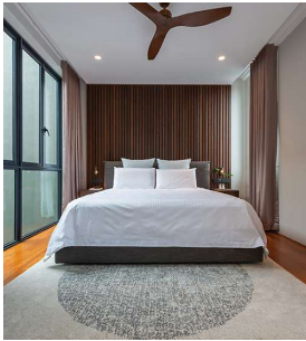
However, a masterstroke in this apartment is the opening up of an awkward space where the air conditioner condenser was originally installed. Jain and Loberg replaced it with a glass-walled Zen garden, and with ample natural light finally streaming in, laid out a study in the node that connects all bedrooms.



Jain and Loberg also maximized the balcony space that wraps around the living room, setting furniture for quiet contemplation and informal gatherings. They redid the ensuite master bathroom, accommodating a spacious sink counter, toilet, shower, and a Japanese bathtub.

The previous projects they have delivered to this particular client covered larger footprints and allowed for more elaborate elements, but Jain and Loberg confess that this apartment required so much despite its size. "It has a lot of character," Jain says, "and it speaks volumes about the people who live in it."

RELATED ARTICLES



SPOTLIGHT

Vertical Connectivity



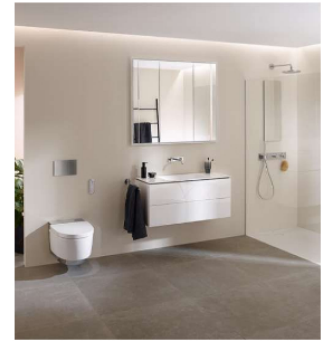
LIFESTYLE

SPACE: Ready For Outings, Strips In Place & Long Repose



SPOTLIGHT

XTRA: Mix With Confidence & Wallow In Whims



LIFESTYLE

Geberit: Bathrooms for Better Health

Geberit is constantly innovating the humble restroom to bring us washbasins, taps, and toilets that are more hygienic than ever before.



INSIDE BY PORTFOLIO 2020

Vertical Connectivity

11 Dec 2020



While Karen is baking in the kitchen on the ground floor, and her husband Raphael is reading on the sun deck on the second floor, they manage to keep an eye on their

sons Russell and Keagan. At the core of their 5,000-square-foot home, architect Yew, from the multidisciplinary design practice oonarchi, has built an air well that connects three of the structure's five levels like a glass-walled shaft. The architectural 'device' – and it does function like one – amplifies air and light flow into the interiors besides providing space for an interior courtyard and visual accessibility.



Raphael and Karen wanted a highly functional home with a minimalist feel defined by fine finishes and well-crafted furniture pieces. This setting is both emotional and inspirational, Yew says.

“The spatial requirements arose from a series of collaborative conversations where Raphael, Karen, and I arrived at a common appreciation for shared spaces and communal living. We saw the potential in having pockets of outdoor insertions as a form of communal space that connects the family,” Yew elaborates.



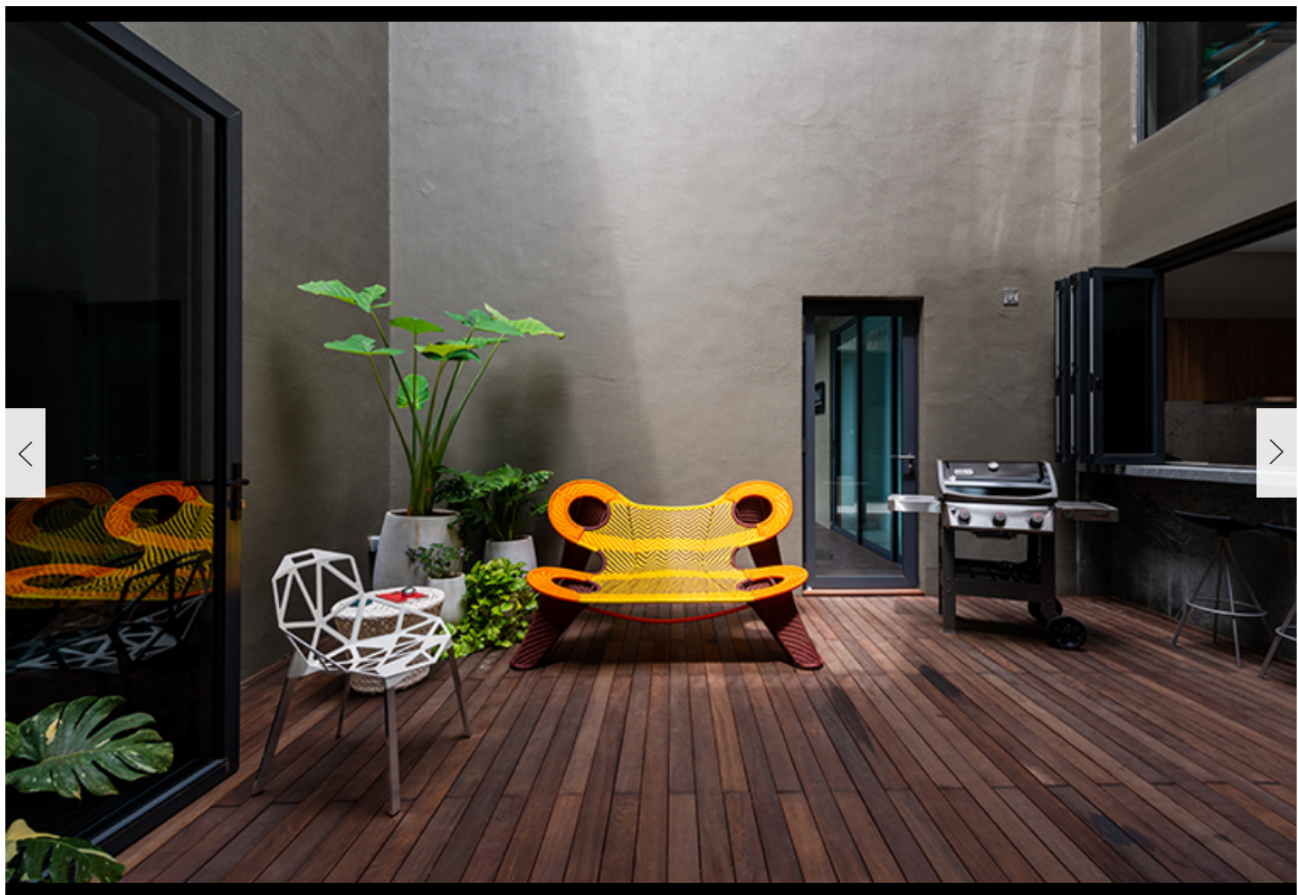
Besides the typical communal spaces, such as living, dining, and family areas, Yew felt that outdoor spaces presented an opportunity as the in-betweens and 'common' boundaries to bring the family closer. The design of these spaces was given equal emphasis as the interior.

The design reworked the original dwelling unit that sat on a largely unused green plot into one with shared walls and courtyards that takes reference from traditional shophouses where little pockets of garden insertions create a direct and intimate relationship between the interior and exterior spaces.

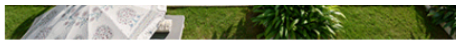
Since moving in, Raphael and Karen have been feathering their nest so to speak, making it comfortable and inviting. They work with Yew to furnish and decorate the various rooms of the house, as well as with local plant shop *Local Loco* to bring green elements into various parts of the house. Pots of rare tropical foliage, a Local Loco specialty, have since brightened up the living and dining rooms, as well as the inner courtyard; meanwhile, orchids have brought life to pockets of spaces in the master bedroom and the ensuite toilet.

On most weekends and special occasions, Karen would engage the services of boutique florist *Sarahs Fleurs* to have some unique floral arrangements in various rooms.

As the community's movements are still partially restricted, Raphael, Karen, and their two boys are often home together. They may have started to show individual preferences for certain spaces around the house, but its design allows them to stay close wherever they may be. And it doesn't take much for Karen to gather everyone in the interior courtyard – her freshly baked cakes often do the trick.



INSIDE by **PORTFOLIO**
A HOMES SUPPLEMENT



RELATED ARTICLES



LIFESTYLE

SPACE: Ready For Outings, Strips In Place & Long Repose



SPOTLIGHT

XTRA: Mix With Confidence & Wallow In Whims



LIFESTYLE

Geberit: Bathrooms for Better Health

Geberit is constantly innovating the humble restroom to bring us washbasins, taps, and toilets that are more hygienic than ever before.



SPOTLIGHT

De'Longhi: Crema of the Crop

Make the perfect drop of coffee every time with De'Longhi La Specialista, no matter if you're a trained barista or brewing your first cup.

INSIDE BY PORTFOLIO 2020

SPACE: Ready For Outings, Strips In Place & Long Repose

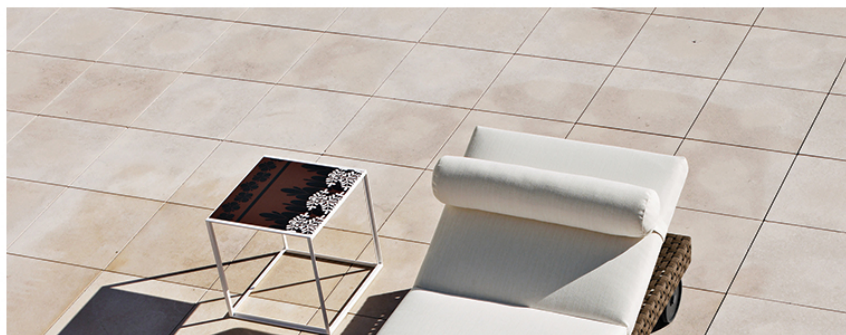
01 Dec 2020

READY FOR OUTINGS

STRIPS IN PLACE

LONG REPOSE

Ready For Outings





Outdoor Chaise Long

Named for Charles Eames, Antonio Citterio's Charles Outdoor Chaise Long for B&B Italia retains the indoor version's style and quality, but adapts a light, solid aluminum core, and a woven polypropylene tape exterior.

READY FOR OUTINGS

STRIPS IN PLACE

LONG REPOSE

Strips In Place





Favela Armchair

The individual strips of wood that make up Favela Armchair, by the Campana brothers for Edra, are not adhered to an internal frame – its form is determined by expert craftsmanship. Available in pine for indoor and teak for outdoor.

READY FOR OUTINGS

STRIPS IN PLACE

LONG REPOSE

Long Repose



Landscape '05 Chaise Longue

Landscape '05 Chaise Longue, by Jeffrey Bennett for B&B Italia, comes in a rocking version as well as one without an armrest. The adjustable headrest is held in place by a magnet.

SPACE Furniture
77 Bencoolen St
Singapore 189653
T +65 6415 0000
W spacefurniture.com.sg



by **PORTFOLIO**
A HOMES SUPPLEMENT

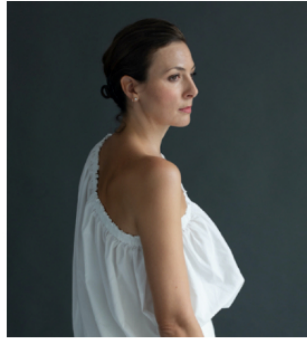
RELATED ARTICLES



LIFESTYLE

All About the Legs

A trio of tables from Porada that boast unique wooden bases



PERSONALITIES

What's In My Portfolio: Juliane Bailey

Juliane Bailey is the Founder of The Jungle Emporium



DESIGN

Otis: A New Approach to Sofas

The Otis by Montis is the perfect solution for every homeowner's sofa needs



LIFESTYLE

Meridiani and the Modern Home

Shining the spotlight on a range of versatile Meridiani furniture that seamlessly fit in today's modern home



INTERIORS

All About the Legs

—
Special feature by Porada
31 Mar 2021
—

A trio of tables from Porada that boast unique wooden bases



With over 70 years in the furniture business, Italian luxury furniture brand *Porada* is a name you can trust when you're looking for wooden furniture that exudes timeless style. The brand, which found its start in 1948, is dedicated to its love for wood and expertly draws out the true beauty from each piece used.

In addition to their furniture, Porada is celebrated for its excellent quality, wood manufacturing expertise, and a well-defined identity within the design industry. Beyond making furniture pieces that fit well within a multitude of homes, the Porada brand is also able to inject refinement with ease in any given environment.

What's more, the brand's cornerstone of "Excellence" and "Equilibrium" is able to deliver quality, as well as a balance between form and function. With its expertise in handling wood and fusing it with other materials, such as metal, glass, and leather, Porada has made a deep impression on consumers in Italy and beyond – from as far as the Middle East to Southeast Asia.

Today, Porada wants to draw our attention to a selection of statement-making tables — whether for the dining area or elsewhere — that say, "Beauty is in the legs". The legs on these tables are anything but ordinary, immediately drawing attention with their elegant and playful forms.

INFINITY

ELIKA

PILAR



Infinity



Designed by Stefano Bigi, the Infinity dining table features a solid canaletta walnut mounted base on a metal plate and a 12mm-thick tempered glass top. The intricately curved legs call to mind the infinity symbol.

INFINITY

ELIKA

PILAR



Elika



The Elika dining table, which was designed by G. Carollo, boasts a structural technopolymer base in both solid canaletta walnut or ash mounted on a metal plate and a 12mm-thick tempered glass top.

INFINITY

ELIKA

PILAR



Pilar

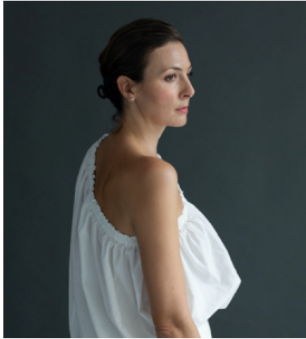


Designed by M. Marconato and T. Zappa, the Pilar dining table has a base made up of several elements in solid ash. It features a 15mm-thick top in transparent tempered glass, fixed through metal plates with a brushed anthracite finish. Finally, it is finished with connecting elements in metal with a black chrome finish.

For more information, [click here](#)

Visit the Marquis QSquare showroom at 16 Tai Seng St, Level 1, Singapore 534138

RELATED ARTICLES



PERSONALITIES

What's In My Portfolio: Juliane Bailey

Juliane Bailey is the Founder of The Jungle Emporium



DESIGN

Otis: A New Approach to Sofas

The Otis by Montis is the perfect solution for every homeowner's sofa needs



LIFESTYLE

Meridiani and the Modern Home

Shining the spotlight on a range of versatile Meridiani furniture that seamlessly fit in today's modern home



LIFESTYLE

Wooden Masterpieces from Porada

A selection of fine wood furniture to consider from Italian furniture maker, Porada

WHAT'S IN MY PORTFOLIO

What's In My Portfolio: Juliane Bailey

by Katherine Arteche

06 Apr 2021

Juliane Bailey is the Founder of The Jungle
Emporium



“*The Jungle Emporium* is a showcase of refined furniture, ceramics, tableware, art, jewelry, and vintage pieces which I have painstakingly sourced from small family-run and socially responsible businesses on my travels across the globe when travel was still possible. The idea to launch *The Jungle Emporium* was born in our wonderful Black & White house in the middle of the jungle and I started working on the brand over two years ago, starting off with the name and later with the logo, which was inspired by the numerous monkeys playing in our garden.

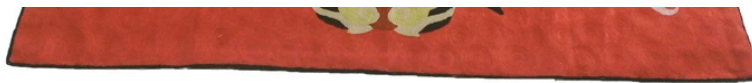
My brand perfectly reflects everything that I love and mirrors my cosmopolitan background having lived in Hamburg, New York, Venice, London, and now Singapore.

My collection is Asian-centric yet I have added on a few European treasures, for example glassware and ceramics from Italy and Spain, as well as cutlery from France. The selection is slowly expanding and I will only add pieces that I personally connect to and never out of a commercial background.



Babar Elephant Side Table





Bengal Tiger Carpet

Our artisanal handcrafted offerings include a few signature pieces, such as our rattan elephant side tables, which I discovered in Java. We also have ceramic candle holders from Northern Thailand, as well as beautiful block printed tablecloths from Jaipur.

My main goal is to expand the brand and gain international recognition and I am delighted that we have seen an increase in orders from clients beyond Singapore over the past few months. I would also like to grow and inspire a passionate team to support my business. Furthermore, I will continue to curate and widen The Jungle Emporium's selection by adding more signature pieces to the collection, as well as our own resort wear line that I am currently developing."

For more information on The Jungle Emporium, click here

INSIDE by PORTFOLIO

A HOMES SUPPLEMENT

RELATED ARTICLES



PERSONALITIES

What's In My Portfolio: Wilson Ang

Wilson Ang is the Managing Director of LABMED



PERSONALITIES

What's In My Portfolio: Franklin Tang

Franklin Tang is the Founder and CEO of Habitap



PERSONALITIES

What's In My Portfolio: Vijay Pillai

Vijay Pillai is the CEO of Caerus Holding



PERSONALITIES

What's In My Portfolio: Graham Pullen

Postgres regional vice president Graham Pullen shares how the open-source database could easily help innovate and accelerate team processes.



WHAT'S IN MY PORTFOLIO

What's In My Portfolio: Wilson Ang



Ang

Photo by Chino Sardea

10 Feb 2021

Wilson Ang is the Managing Director of
LABMED



“ At LABMED, which is a subsidiary of Kim Seng Hong Pte Ltd, we specialize in manufacturing disposable masks, medical masks, surgical masks, KN95-FFP2 masks, as well as other medical instruments. We are headquartered in Singapore and have access to a wide distribution network locally and globally. In addition, LABMED enjoys a strong connection in exporting products all around the world, with special focus on markets like the US, France, Germany, and United Kingdom.

The increased global demand for face masks, nasal swab test kits for COVID-19, protective suits, and other medical supplies saw LABMED's revenue skyrocket within a span of half a year. In August 2020, we hit a turnover revenue of \$220 million. Because of this, we also thought of giving back to the community. We currently find ourselves in a good position to offer assistance, as well actively donate and contribute to the less fortunate so that they too are taken care of during tough times like these when their health and finances are impacted.

Going forward, we have decided to diversify our portfolio to different trades. Recently, we just ventured into F&B, with the opening of a new restaurant and bar. The F&B ventures are already open, which includes a pub in Upper Thomson and FACE Restaurant & Bar at 80 Club Street that serves Asian fusion food. While I have no prior experience with the F&B industry, I personally enjoy dining. By going into this trade, I am able to appreciate it more. In addition, my business partner is also bringing me on board for some fintech projects, with hopes of expanding and doing some cryptomining over in Brunei.

Outside of work, I have a particular interest in both cars and watches. You could say that I am quite a watch fanatic, with Patek Philippe and Rolex being my brands of choice."





by PORTFOLIO
A HOMES SUPPLEMENT

RELATED ARTICLES



PERSONALITIES

What's In My Portfolio:
Franklin Tang

Franklin Tang is the Founder and CEO of Habitap



PERSONALITIES

What's In My Portfolio:
Vijay Pillai

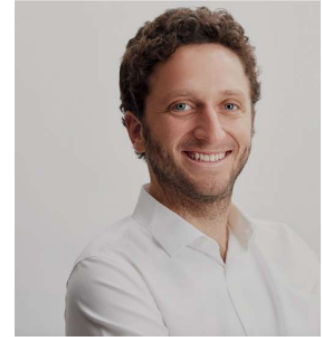
Vijay Pillai is the CEO of Caerus Holding



PERSONALITIES

What's In My Portfolio:
Graham Pullen

Postgres regional vice president Graham Pullen shares how the open-source database could easily help innovate and accelerate team processes.



PERSONALITIES

What's In My Portfolio:
Diego Dultzin Lacoste

Mr. Diego Dultzin Lacoste is the Co-Founder and Chief Finance Officer of OnTheList

WHAT'S IN MY PORTFOLIO

What's In My Portfolio:
Franklin Tang

18 Jan 2021

Franklin Tang is the Founder and CEO of Habitap



" *Habitap* is Asia's first fully integrated smart living platform that combines smart home control, community management, and lifestyle offerings for modern smart living. Harnessing Artificial Intelligence (AI) technology and Internet-of-Things (IoT), we aim to create better living, greater convenience, and efficiency for commercial and residential spaces.

In the last four years, we have seen the uptake of our technology in residential and commercial building projects. This year, we launched two offerings – Tap Residential and Tap Commercial, which offer users a “lite” version while still retaining the core functionality of our Habitap flagship app. Tap Residential aims to bring the essential features of modern luxury living to homes and condominium developments, such as facilities booking with real-time updates and control of smart products and appliances in their homes. Meanwhile, Tap Commercial provides quick deployment of digital access management for commercial buildings.

I am proud of what the entire Habitap team has achieved. We took an idea, made it a vision, and we worked hard at it for the last five years to create an entirely new segment in the real estate industry.

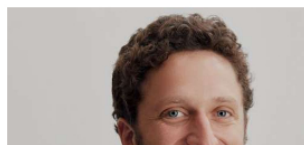
(Related: *What's In My Portfolio, Vijay Pillai*)

In terms of market awareness, we are seen to be the leading brand. We have in excess 8,000 smart homes and manage more than 10 million sqft of commercial spaces. Our user base is just slightly under 100,000 and growing each year. We also just started our office in Indonesia and the Philippines, with Vietnam and China on the way. We are rapidly expanding our talent pool and it's really exciting to grow our vision together.

Habitap 1.0 was about putting the platform in place, giving users a seamless experience to control and access devices and various services. Habitap 2.0 will be focusing on enhancing and augmenting that seamless user experience with the use of artificial intelligence and data."

INSIDE by **PORTFOLIO**
A HOMES SUPPLEMENT

RELATED ARTICLES

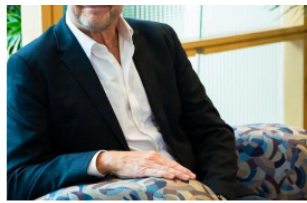




PERSONALITIES

What's In My Portfolio: Vijay Pillai

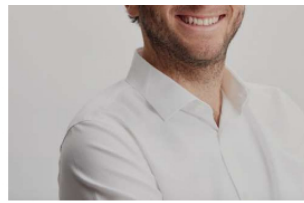
Vijay Pillai is the CEO of Caerus Holding



PERSONALITIES

What's In My Portfolio: Graham Pullen

Postgres regional vice president Graham Pullen shares how the open-source database could easily help innovate and accelerate team processes.



PERSONALITIES

What's In My Portfolio: Diego Dultzin Lacoste

Mr. Diego Dultzin Lacoste is the Co-Founder and Chief Finance Officer of OnTheList



PERSONALITIES

What's In My Portfolio: Bryan Koh

Baker, food scholar and award-winning author

WHAT'S IN MY PORTFOLIO

What's In My Portfolio: Vijay Pillai

—
Interview by Anton D. Javier
10 Dec 2020
—

Vijay Pillai is the CEO of Caerus Holding



The portfolio that I am putting forward is the growing stable of F&B brands under Caerus Holding. It is made up of brands from around the world that offer unique experiences and have gone on to become remarkable success stories and culinary cornerstones of their community. We work with these brands as both their regional partners and guardians, serving as a natural extension of the brand to inject them into the local dining scene, amplify their presence while keeping true to all aspects of the product, and eventually expanding them into the region.

Caerus started in 2008 as a wine distribution business. When we diversified into F&B in 2013, we had a vastly different strategy that was anchored in creating original

concepts. But the core of our business has always been focused on bringing unique experiences to the local and regional market and that remains unwavering today. We first brought in Lady M in 2013 and through its success, we found a new niche and have built on that since, with the opening of Danish patisserie Leckerbaer from Copenhagen and *Luke's Lobster* of New York in the third quarter of 2020.

We remain focused on bringing unique dining experiences from around the world into the local market, and committed to expanding their footprint across the region. With travel restrictions worldwide, what we bring to the local market is more important than ever today. For some, it's a conduit for memories of their go-to lobster roll every time they visit New York City, or a box of småkager they pick up as gifts on their way home from Copenhagen. For others, we're bringing a piece of culinary fabric from overseas and weaving it into our own.

(Related read: *All roads lead to Luke's Lobster*)

We are working on the opening of a few more new-to-market brands that will bring the same sense of excitement as any of our past brands did. Once we've amassed a wider portfolio, we're looking to expand these brands as collective units in a way that is intended to shake up the mix and inject new life into traditional retail operations, such as shopping malls and departmental stores.



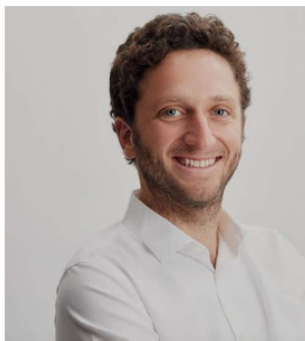
RELATED ARTICLES



PERSONALITIES

What's In My Portfolio: Graham Pullen

Postgres regional vice president Graham Pullen shares how the open-source database could easily help innovate and accelerate team processes.



PERSONALITIES

What's In My Portfolio: Diego Dultzin Lacoste

Mr. Diego Dultzin Lacoste is the Co-Founder and Chief Finance Officer of OnTheList



PERSONALITIES

What's In My Portfolio: Bryan Koh

Baker, food scholar and award-winning author



PERSONALITIES

What's In My Portfolio: Adeline Kueh

Senior Lecturer, MA Fine Arts Programme, LASALLE

What's In My Portfolio: Graham Pullen



Interview by Marc Almagro
02 Sep 2020

Postgres regional vice president Graham Pullen shares how the open-source database could easily help innovate and accelerate team processes.



EnterpriseDB delivers enterprise-class software, services, and support to ensure that teams realize the full potential of the open-source database, *Postgres*. We care deeply about Postgres, not just as a technology but as an accelerator for teams who are struggling to innovate and go faster. Our software pushes Postgres further through enhanced management tools, along with security and compatibility features.

In Southeast Asia, EnterpriseDB and its business partners license its open source-based data management platform (24/7 fully supported Enterprise Postgres and Advanced Postgres Server products) plus EDB professional services.

We are seeing more people try Postgres and consume our free training, but with the remote work model, it has become more challenging to engage with them live. Given our sales cycles, it is difficult to assess the full impact of the lockdown on our business. We hear, anecdotally, that in this down economy, more companies are looking to open source as a way to manage costs while still meeting business objectives.

As the economy reopens gradually, EnterpriseDB will remain intensely focused on the safety and wellbeing of its employees. Our teams and partners have worked hard to stay engaged with our customers and ensure business continuity stays in place. Business discussions continue to be very active with all of our customers and prospects. When it is safe to do so, we will all enjoy face-to-face meetings again.

Our plan as always is to remain focused on the needs and support of our customers as they ramp up their productivity. Many have taken the opportunity to investigate new ways of reducing costs within their current expensive DB stacks, and we are excited

to be able to engage on several large migration projects.

While highly respectful of the changes our clients are making to their operational environments, as restrictions are starting to lift, EnterpriseDB is exploring ramping its Singapore hiring to support the new needs it has seen emerge in the past months.



by PORTFOLIO
A HOMES SUPPLEMENT

RELATED ARTICLES



PERSONALITIES

What's In My Portfolio: Diego Dultzin Lacoste

Mr. Diego Dultzin Lacoste is the Co-Founder and Chief Finance Officer of OnTheList



PERSONALITIES

What's In My Portfolio: Bryan Koh

Baker, food scholar and award-winning author



PERSONALITIES

What's In My Portfolio: Adeline Kueh

Senior Lecturer, MA Fine Arts Programme, LASALLE



PERSONALITIES

What's In My Portfolio: Martin Ng

Baritone & Artistic Director, The Arts Place



WHAT'S IN MY PORTFOLIO

What's In My Portfolio: Diego Dultzin Lacoste

Interview by Anton D. Javier
03 Aug 2020

Mr. Diego Dultzin Lacoste is the Co-Founder and Chief Finance Officer of OnTheList

